

# ALL PRODUCT BROCHURE

2026



WWW.SUREWAYMETAL.COM



**Sureway Formwork  
Systems**

# SUREWAY FORMWORK

## PRECAST FORM FABRICATION

Market Leader in the Precast Industry

Established in 1970, Sureway Formwork is a premier manufacturer of precast forms for the pipe and concrete industry. Our in-house design and engineering services enable us to collaborate closely with clients, ensuring the most efficient and economical concrete pouring solutions. Our 140,000 sq/ft fabrication facility features state-of-the-art machinery and specialized departments for welding, hydraulics, machining, electrical work, and painting.

Our certified CWB welding staff and dedicated engineering, design, and sales teams are committed to delivering high-quality products on time and within budget. We are CWB certified and hold CSA W47.1, W59, and W186 certifications, supported by a rigorous QC/QA program.

*Sureway Formwork specializes in engineering and fabricating a wide range of forms, including:*

- Box Culvert Forms
- Curb Inlet Forms
- Casting Table Forms
- Headwall Forms
- Lifting Beams
- Manhole Forms
- Median Barrier Forms
- Grade Ring Forms
- Double Tee Forms
- Girder Forms
- Stair Forms
- Box Forms
- Vault Forms
- Lamp Base Forms
- Retaining Wall Forms
- Flared End Forms
- Pouring Buckets
- Utility Box Forms
- Septic Tank Forms
- Spill Containment Forms
- Storm Shelter Forms
- Emergency Bunker Forms
- Retention Block Forms
- Battery Grade Ring

With our expertise and comprehensive services, Sureway Formwork ensures that every project meets the highest standards of quality and performance.

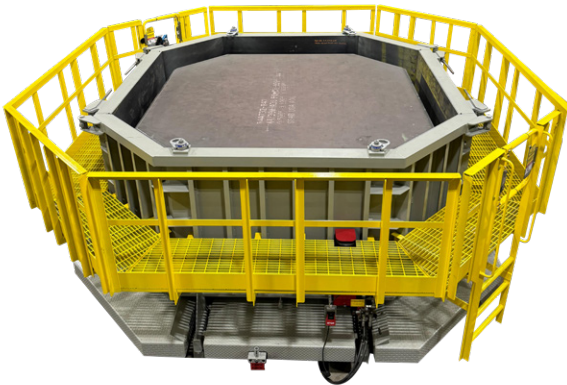
## SUREWAY GROUP OF COMPANIES

Steel Processing Division

Precast Form Division

Steel Galvanizing Division

Steel Fabrication Division



Sureway "Smart" Octagon Form



Sureway "Smart" Box Form



Four Roll Back Box Form with Catwalk



Four Roll Back Complete with Haunch



**Box Culvert (Extendable)**



**Smart Form Technology**



**Three Sided Roll Back Form**



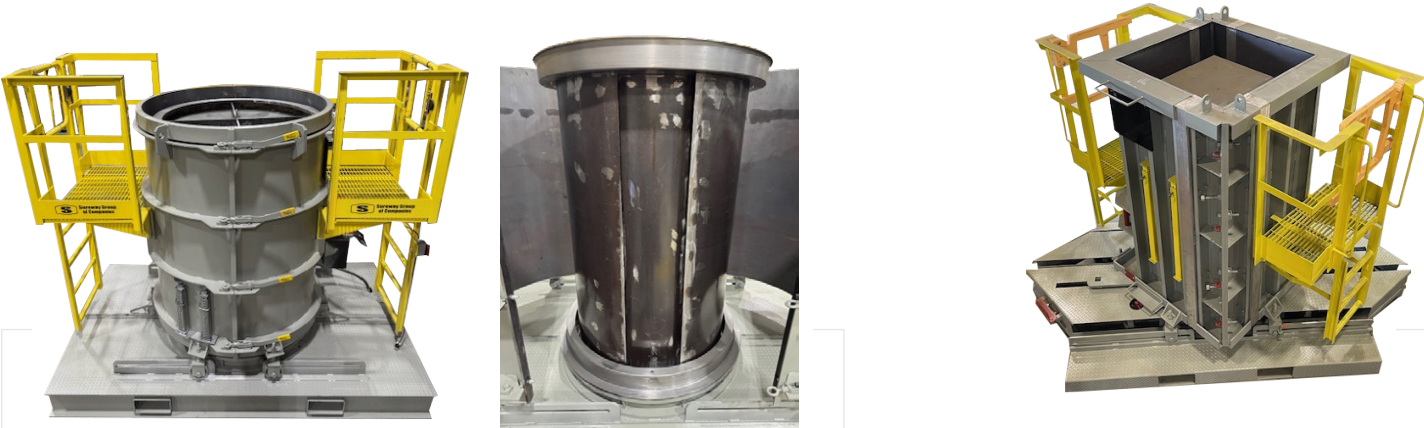
**Curb Inlet Form**



**Two Piece Roll Back Form**



**Four Roll Back Octagon Form with 360 Catwalk**



**Pipe Form, Hydraulically Collapsing Core**

**Two Piece Roll Back with Adjustable Wall Thickness**



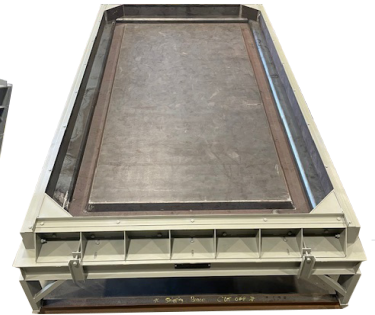
**Four Roll Back Box Form Complete with Knockouts**



**Roll Back Barrier Form**



**Retaining Wall Form**



**Stackable Slab Forms**



**Manual Collapsing Pipe Form**



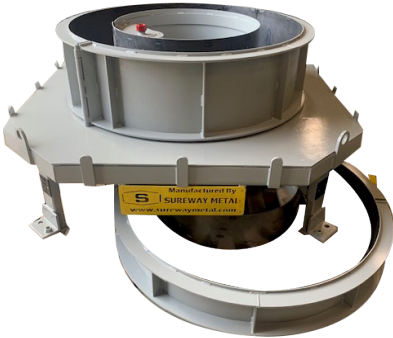
**Trench Form**



**Sound Wall Barrier Form**



**Standard Riser**



**Individual Pour Grade Ring**



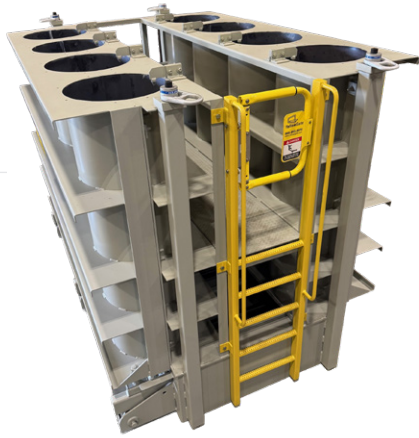
**Median Barrier Form**



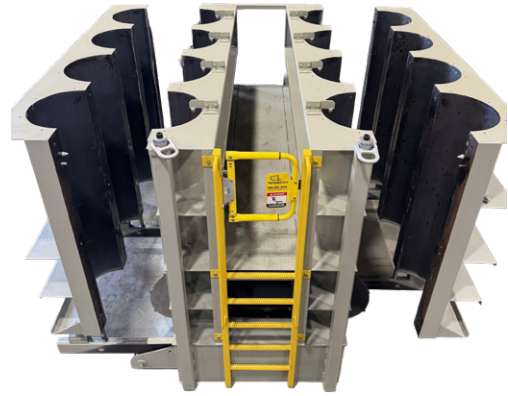
**Manhole Cone Form**



**Small Four Roll Back Form**



**Light Pole Base Form**



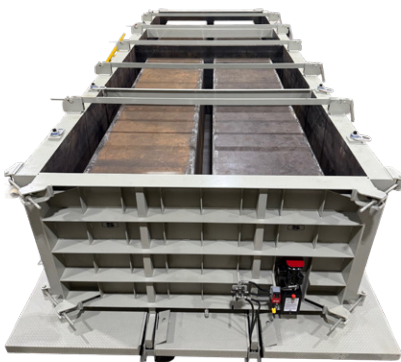
**Light Pole Base Form**



**Grade Ring Form**



**Single Trench Form**



**Double Trench Form**



**Large Diameter Pipe Form**

**ALL PRODUCT BROCHURE**



**S**

**FORMING THE WORLD**

**SINCE 1970**



**Sureway Formwork  
Systems**

285120 Duff Drive SE  
Calgary AB, T1X 0K1

Phone: 403.287.2742  
Fax: 403.243.6457